

ELECTRICAL CURRENTS

A Newsletter from the Office of L&I Chief Electrical Inspector Wayne Molesworth

July 2024

Question of the Month:

What word was misused in the June 2024 issue of the Electrical Currents Newsletter? You can find last month's issue [here](#).

See the answer on the bottom of page 2.

Something to "Spark" Your Interest

Did you know that [TIA 23-9](#) amends NEC 680.26 requirements for equipotential planes for pools and fountains on April 10, 2024?

According to WAC [296-46B-010](#), the adopted version of the National Electrical Code (NEC) includes all subsequent Errata and Tentative Interim Amendments (TIAs) issued by the National Fire Protection Association.

Stay current on TIAs and errata, find them under the Current & Prior Editions tab on the [NFPA 70 \(NEC®\)](#) webpage.

Learn more: <https://www.nfpa.org/for-professionals/codes-and-standards/standards-development/tias-errata-and-fis>

Becoming an Electrical Contractor

To carry on the business of the [electrical construction trade](#), you must get an electrical contractor license from L&I.

- General electrical (01) contractors are licensed to perform all types of electrical and telecommunications installations.
- Specialty electrical contractors are licensed to perform work within a category described in [WAC 296-46B-920\(2\)](#).

License requirements

A valid UBI number issued by the [Department of Revenue](#) or [Secretary of State's](#) office.

- A certified, assigned electrical administrator or master electrician.
- An original, \$4,000 electrical/telecommunication contractor's surety bond, or assignment of savings account.
- A workers' compensation account if the business has employees.
- No outstanding, unpaid citations.

To apply, complete an [Application for Electrical or Telecommunications Contractor License](#) (F500-018-000). In a single envelope, mail it and all other forms required as instructed on the application form.

Avoid Delays - Outdated Forms - Fees are not Correct

We have been updating you about the fee changes that took effect July 1. If you must use a form, get the current version from our [website](#). To avoid using an outdated form, clear your browser cache and dispose of any old forms you may have lurking around.

Safety Tip of the Month

Listed electrical equipment must be installed and used in accordance with the manufacturer's installation instructions. Always read the instructions and follow them, also, leave a copy on the jobsite for the inspector and the owner.

This document may contain hyperlinks to internet web pages.

Access this PDF document online at:

<https://lni.wa.gov/licensing-permits/electrical/electrical-currents-newsletter/>

Electrical Section Internet Address: <https://www.lni.wa.gov/> -

Select Licensing & Permits, then Electrical



Renewing? Our Online Services Save You Time and Money!

For lower fees and faster results, visit [Manage Licenses and Certifications \(wa.gov\)](#). While you are renewing, verify that your address is correct. You can also order reprints of lost or misplaced cards if later needed.

To locate your license or certificate number, use our [Verify](#) tool.

Avoid undeliverable or returned mail by using the correct US Postal format for your address. Make sure your address is correct using [USPS's look up tool](#). If your address is at an apartment complex or business park, make sure you include your apartment or suite number.

Factory Assembled Structures (FAS) Rule Update

The FAS Advisory Board is expanding its members and is looking for electricians to join.

The [Washington State Department of Labor & Industries](#) (L&I) adopted changes to the factory assembled structures rules. The changes affect L&I's Factory Assembled Structures (FAS) Advisory Board, and distributing inspection insignia to manufacturers of recreational vehicles (RV's). The new rules will take effect July 22, 2024.

You can review the adopted rules [here](#). If you have any questions or want to know how to participate in the rule development, please contact us at FAS1@Lni.wa.gov or call 1-800-705-1411, Option 3.

Expired Administrators/Master Electricians - What happens next?

The [Verify](#) tool makes it easy to monitor the status of assigned administrators/master electricians. If they do not complete their education requirements and renew before they expire, they are automatically unassigned. This starts a serious chain of events:

Administrators/Master Electricians:

- To activate, complete your education requirements and pay the double fee to renew.
- If you do not renew within 90 days, you will have to retake and pass the exam.
- To reassign, complete this [form](#) and paying the fee.

Electrical Contractor:

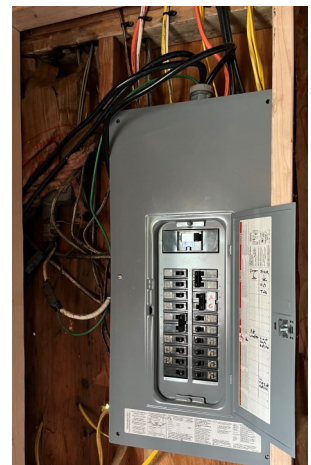
- 90 days after your administrator/master expires, your license is suspended if they do not complete renewal and reassign by completing this [form](#) and paying the fee.
- If suspended, you cannot purchase permits, request inspections or do business as an electrical contractor.
- [Reinstate online](#) after your administrator/master is assigned.

Answer to the Question of the Month:

If you said "site", you are correct. It should have been "sight", not "site".

Learn more about "in sight from", "within sight from", and "within sight of" in NEC 110.29.

Picture of the Month: When they exposed the framing, a home owner remodeling their newly purchased home found work that was never inspected. Notice the open conductors and splices. This is an example of the underground economy at work. Permits and inspections matter! *If viewing this document online, click on the picture to open a larger image.*



This document may contain hyperlinks to internet web pages.
Access this PDF document online at: <https://lni.wa.gov/licensing-permits/electrical/electrical-currents-newsletter/>

Electrical Section website: www.lni.wa.gov/ - Select Licensing & Permits, then Electrical

This document is available in alternative formats to accommodate persons with disabilities. For assistance, call 1-800-547-8367. (TDD/TTY users, please call 360-902-5797.) Labor & Industries is an Equal Opportunity employer.